

Strange

GM G-Body Coil-over Rear Shocks

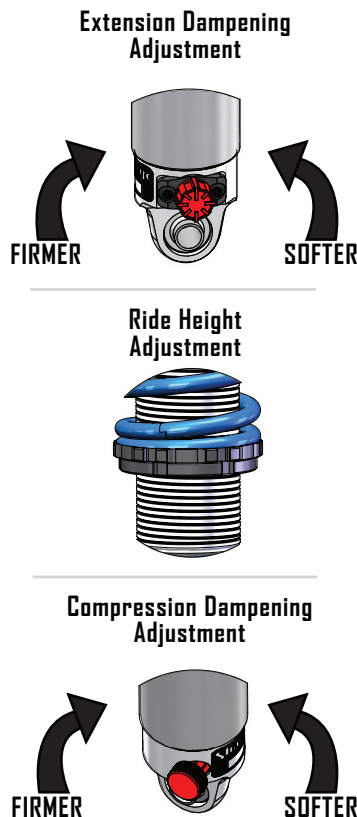
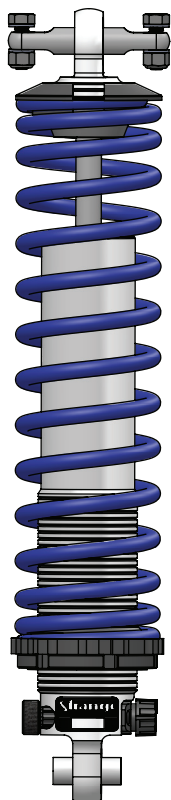
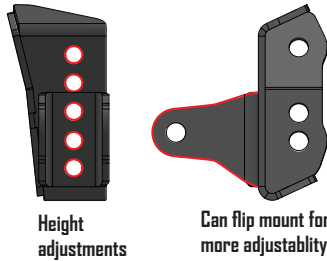
Installation to be performed by a qualified technician.

RaceStrange

- Drag racing
 - Softening extension allows more downward force on the rear tires
 - Stiffening compression delays the return to normal ride height
- Performance Street / Road Racing
 - Stiffening extension & compression reduces body roll
 - Enhances handling & cornering characteristics
- 20.53" Extended / 13.32 Compressed
- 18.125" shock eye to eye at ride height
- Lightweight aluminum body
- 10 extension & compression settings
- Provides a wide range of control
- Easily accessible external adjustment knob

Adjustable lower mount

- Ease of ride height adjustment without changing lower spring seat position
- Allows fine tuning of rebound and bump travel if ride height is changed by spring length or lower spring seat position
- 6 positions with 0.375" increments
- Total of 1.875" of adjustment



REAR COIL OVER SHOCKS STOCK REAR END HOUSING

Part #	Adjustability	Year
S5280LS	Single	78-88
S5280RS	Single	78-88
S5080LS	Double	78-88
S5080RS	Double	78-88

REAR COIL OVER SHOCKS 2011 & NEWER STRANGE REAR END HOUSING

Part #	Adjustability	Year
S5280L	Single	2011+
S5280R	Single	2011+
S5080L	Double	2011+
S5080R	Double	2011+

SHOCK EXTENSION ADJUSTMENT

- 10 settings
- Full clockwise is the firmest position
- Full counter-clockwise is the softest position
- Shipped at softest settings

SHOCK COMPRESSION ADJUSTMENT

- Compression is adjustable only on double adjustable shocks
- 9 compression settings
- Full clockwise is the firmest position
- Full counter-clockwise is the softest position
- "Clicks" 1/8 every turn for fine adjustment

REAR COMPRESSION DAMPENING

Application	Adjustment
Drag Race	2 or 3
Street	4 or 5
Road Race	7 or 8

REAR EXTENSION DAMPENING

Application	Knob Position
Drag Race	5
Street	4 or 5
Road Race	7 or 8

Hypercoil & Knight springs are available in a variety of rates and lengths

Suggested spring of 14", 125 lbs/in - 150 lbs/in

PARTS LISTS AND EXPLODED VIEW FOR 2011+ NEWER STRANGE REARS & STOCK REAR

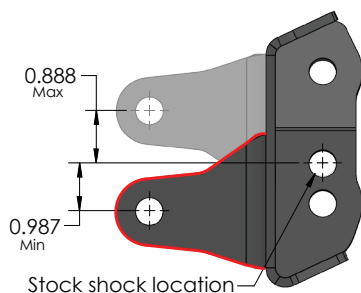
STOCK REAR

ITEM#	PART#	QTY	DESCRIPTION
1	S5000KAS	1	Spherical bearing
2	S5001FS	1	Bar pin
3	S5000KW	1	Spherical bearing 1/2" WD.
4	S5001IT	2	Retainer ring for bar pin
5	H1400G	2	5/16-18 x 1" HHCS GR8
6	B3362V	4	5/16 AN Washer-1/16 Thick
7	B3360E	2	5/16-18 Nylock nut
8	H1108EL/ER	1	Shock mount LH/RH rear
9	B4160B	2	1/2-20 x 1 1/2" HHCS
10	S5001KB	3	1/2" SAE washer
11	S5001KA	2	1/2-20 NY-Lock nut
12	H1119D	1	Shock mount bracket
13	N1965A	2	7/16-20 x 7/8 HHCS GR8
14	B1346C	2	7/16-20 Locknut
15	H1170B	1	1/2-20 X 2.5" HHCS GR.8
16	S5080S	2	Angled washer
17	H1135C	1	1/2-20 Locknut
18	S5008A/S5208	1	8" Shock

2011 AND NEWER STRANGE HOUSING

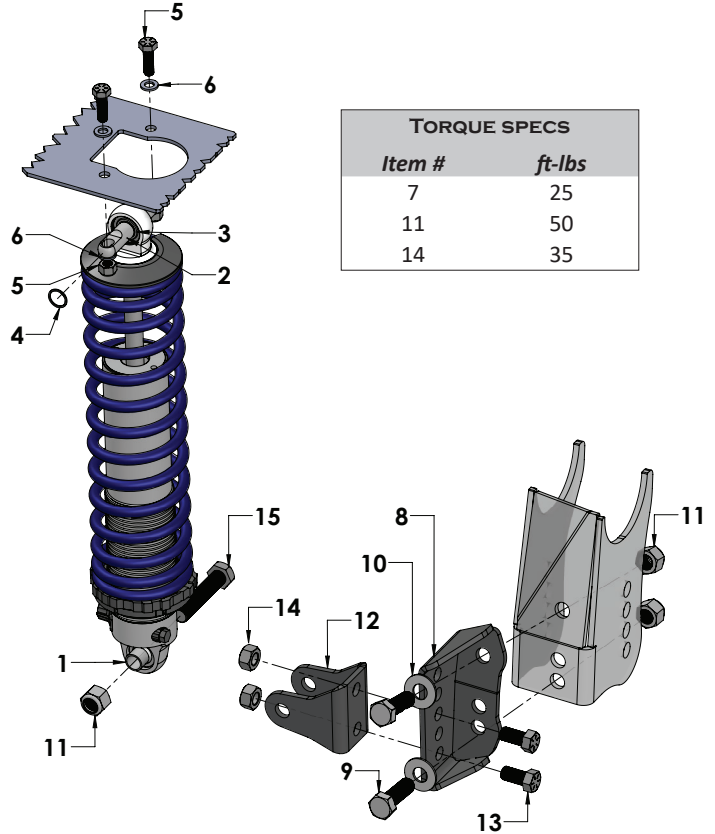
ITEM#	PART#	QTY	DESCRIPTION
1	S5000KAS	1	Spherical bearing
2	S5001FS	1	Bar pin
3	S5000KW	1	Spherical bearing 1/2" WD
4	S5001IT	2	Retainer ring for bar pin
5	H1400G	2	5/16-18 x 1" HHCS
6	B3362V	4	5/16 AN washer -1/16 thick
7	B3360E	2	5/16-18 Nylock nut
8	H1108EL/ER	1	Shock mount LH/RH rear
9	B4160B	2	1/2-20 x 1-1/2" HHCS
10	S5001KB	4	1/2" SAE washer
11	S5001KA	3	1/2-20 NY Lock nut
12	H1119D	1	Shock mount bracket
13	N1965A	2	7/16-20 x 7/8 HHCS
14	B1346C	2	7/16-20 Lock nut
15	H1170B	1	1/2-20 x 2.5" HHCS
16	S5008A/S5208	1	8" Shock

MIN AND MAX HEIGHTS FOR SHOCK MOUNT



COIL-OVER SHOCK EXPLODED VIEW

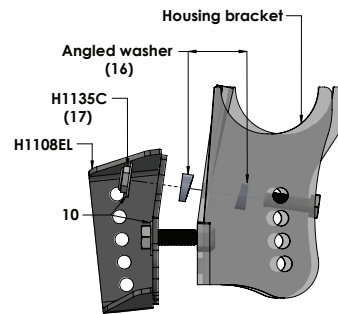
S5080R SHOWN



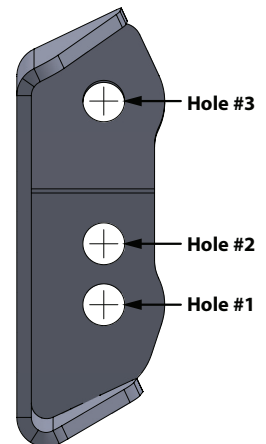
TORQUE SPECS

Item #	ft-lbs
7	25
11	50
14	35

ANGLED WASHER ARRANGEMENT



BRACKET HOLE IDENTIFICATION



Bolt is mounted from inboard side of LCA mount so the spacer doesn't spin when tightened
Note: Stock rear setup only

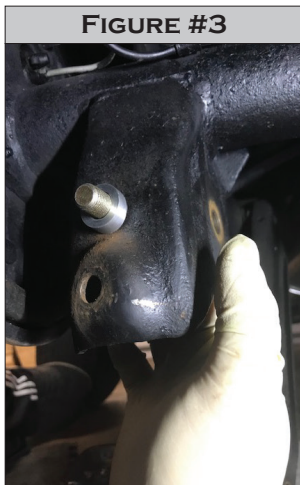
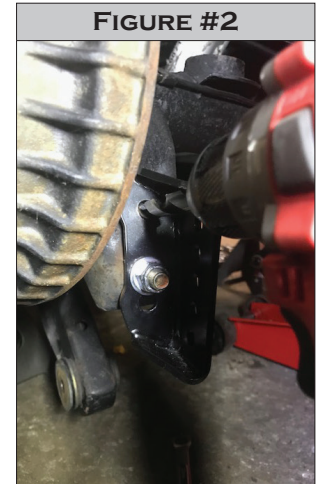
Strange 2011 and Newer
 -Use Hole #1 and Hole #3
Stock rear
 -Use Hole #2 and Hole #3

INSTALLATION INSTRUCTIONS

1. Raise and support the rear of vehicle on a level surface using suitable equipment.
2. Consult the factory service manual to remove the shock.
3. Once the shock is off the car, align the shock mount with the existing holes on the housing bracket.
4. Fasten a bolt into hole #2 (For stock rears) or hole #1 (For Strange rears 2011-2018). Making sure the rear shock mount is level, drill a $\text{Ø}17/32$ hole in the housing bracket using hole# 3 as a guide. (Figure #1 & 2)
5. Using holes #1 and #3 secure the rear shock mount (8) in place using the bolts (9), washer(10) and locknut (11), torquing the locknuts to 50ft-lbs.(2011-2018 Strange rear)

Steps 6 - 8 pertain only to Stock rear setups

6. After the hole is drilled, take off the rear shock mount. Place an angled washer (16) on the bolt and insert it on the inner side of the housing bracket.



7. Place the second angled washer on the bolt on the outer side of the housing bracket. (Figure #3)
8. Place the rear shock mount back on the housing bracket and fasten it with a washer (10) and locknut (17) in hole #3. Torque the locknuts to 50 ft-lbs to fully attach it to the housing. (Figure #4)
Note: Check the *Angled washer arrangement* on page 2 to insure proper orientation and placement.
9. Align the shock mount bracket (12) using the holes of the rear shock mount.
10. Place the bolts (13) into the shock mounting bracket (12) and fasten them with the lock nuts (14), torquing them to 35 ft-lbs. (Figure #5)
Note: Refer to page 1 for more information on adjustable shock mount positions.

11. Install the spring onto the shock assembly. Screw the spring seat and jam nut all the way to the bottom of the shock and then slide the spring over the shock. If needed, use a spring compressor to compress the spring only enough to slide the top spring seat into place.
12. Slide the T-bar (2) into the eye-mount of the shock
13. Secure the T-bar in place using retainer rings (4) on both sides of the spherical bearing.
14. Place the shock into the shock mounting bracket. Slide the bolt (15) in and secure it with the lock nut(11), torquing it to 50 ft-lbs.
15. Line the holes in the T-bar with the top mounting holes in the frame.
16. Using the 5/16" bolts (5), washer(6) and locknut (7), secure the shock in place, torquing the locknuts to 25 ft-lbs. (Figure #6)

