

# Strange

## GM A & G Body Front Coil-over Shocks

Installation to be performed by a qualified technician.

### Installation Notes

- Must use supplied control arm reinforcement plate or control arm breakage may occur.
- Suggested spring is 10" Conical 350lbs/in - 450lbs/in

### Buick

1973-1981 Century  
1982-1987 Grand National  
1973-1987 Regal  
1975-1979 Skylark

### Chevy

1973-1977 Chevelle  
1973-1987 El Camino  
1973-1983 Malibu  
1973-1988 Monte Carlo  
1975-1979 Nova

### Oldsmobile

1973-1980 422  
1973-1988 Cutlass  
1975-1979 Omega

### Pontiac

1973-1987 Grand Prix  
1973-1974 GTO  
1973-1977 Lemmas  
1974-1977 Ventura

### GMC Truck

1982-2004 S15 Truck 2WD  
1982-2004 S15 Jimmy 2WD

### Chevy Truck

1982-2004 S10 Truck 2WD  
1982-2004 S10 Blazer 2WD

- Fits stock lower control arms
- Aftermarket lower control arms using T-bar mount must verify fitment  
-Refer to page 2 for more information
- Compatible with double shear aftermarket lower control arms  
-Requires 1/2" ID x 1" wide spherical bearing (Part# S5000KT)
- Has an adjustable ride height
- Spherical bearing mounts on bottom  
-Eliminates deflection and resistance associated with rubber bushings
- Drag racing  
- Softening extension allows for more weight transfer  
- Stiffening compression further aides in weight transfer
- Performance Street / Road Racing  
-Stiffening extension & compression reduces body roll  
-Enhances handling & cornering characteristics
- 12.500" Extended / 8.830" Compressed
- Lightweight aluminum body
- 11 extension & 9 compression settings
- Provides a wide range of control
- Easily accessible external adjustment knob

### FRONT COIL OVER SHOCKS

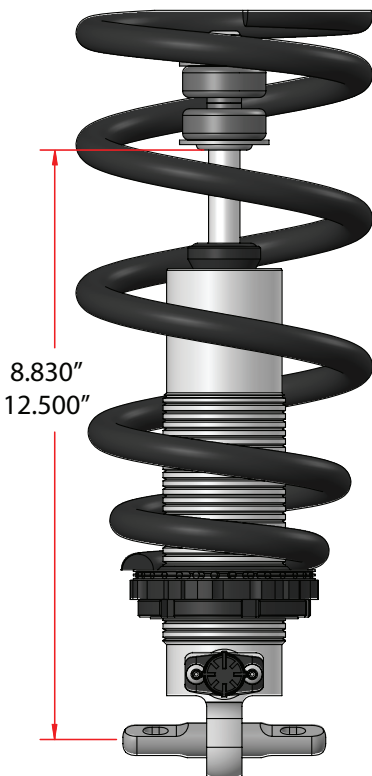
Part #	Adjustability
S5065 (Ea.)	Double
S5265 (Ea.)	Single

### SHOCK EXTENSION ADJUSTMENT

- 11 settings
- Full clockwise is the firmest position
- Full counter-clockwise is the softest position
- Shipped at softest settings

### SHOCK COMPRESSION ADJUSTMENT

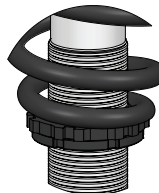
- Compression is adjustable only on double adjustable shocks
- 9 compression settings
- Full clockwise is the firmest position
- Full counter-clockwise is the softest position
- "Clicks" 1/8 every turn for fine adjustment



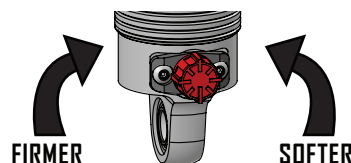
### FRONT COMPRESSION DAMPENING

Application	Adjustment
Drag Race	2 or 3
Street	4 or 5
Road Race	7 or 8

### Ride Height Adjustment



### Extension Dampening Adjustment



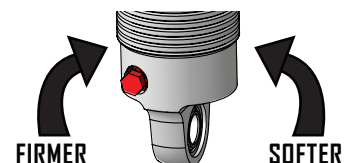
### FRONT EXTENSION DAMPENING

Application	Knob Position
Drag Race	5
Street	4 or 5
Road Race	7 or 8

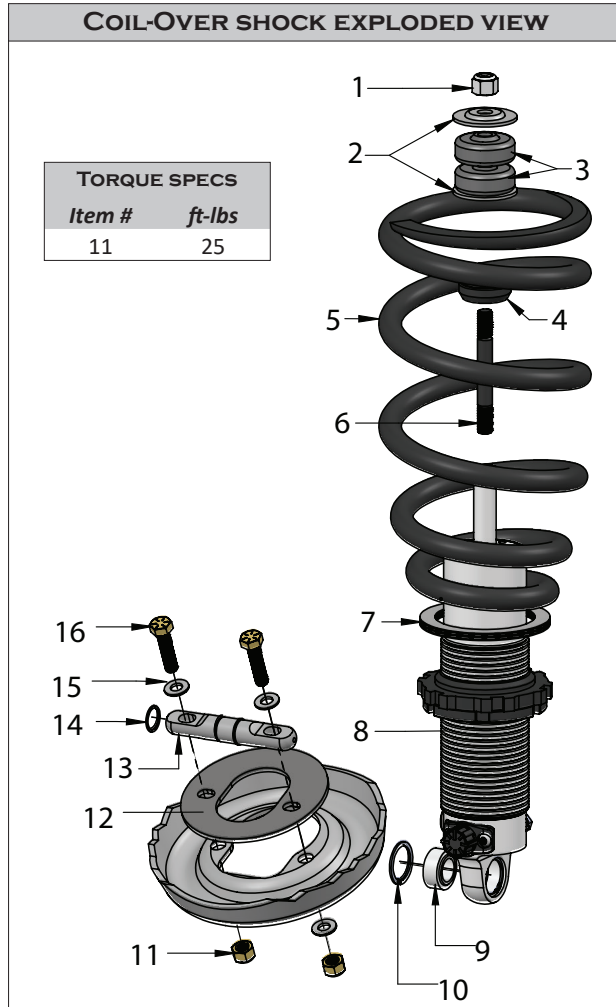
### CONICAL SPRINGS

Length	Rate	Part #
10"	350	SPK10C350A
10"	400	SPK10C400A
10"	450	SPK10C450A

### Compression Dampening Adjustment



## PARTS LIST & EXPLODED VIEW AND INSTRUCTIONS

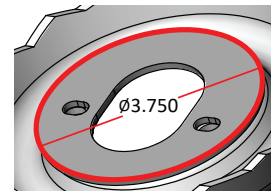


S5065 & S5265 PARTS LIST			
ITEM#	PART#	QTY	DESCRIPTION
1	B4158B	1	5/8-18 Locknut
2	S5001X	2	Cushion Washer
3	S5001W	2	Shock Cushion
4	S5065C	1	Bumper
5	Page 1	1	Conical Spring
6	S5001Z	1	Head Stud
7*	S1409	1	Thrust bearing
8	-----	1	Shock
9	S5000KW	1	Spherical bearing
10	S5000L	2	Snap ring
11	S5065F	2	5/16-24 Locknut
12	S5065D	1	Reinforcement plate
13	S5001ES	1	T-bar
14	S5001IT	2	Spirolock
15	H1106FA	4	Washer
16	S5065E	2	5/16-24 x 1-3/4 HHCS

\*Thrust bearing is optional

### Aftermarket Control Arm

- Be sure to check that nothing interferes with the OD of the reinforcement plate when placing it onto the mounting surface of the control arm.



### DISCLAIMER OF WARRANTY

Purchasers using Strange Engineering racing components and equipment any and all inventory services, purchasers acknowledge that due to differing conditions and circumstances under which all equipment and parts are installed and used, purchasers are not relying on Strange Engineering Co. skill or judgment to select or furnish the proper part or equipment.

Purchasers expressly affirm they are relying upon their own skill or judgment to select and purchase suitable goods. Strange Engineering Co. makes no warranties whatsoever, expressed or implied, oral or written, to purchasers. There is no warranty of merchantability made to purchasers. Strange Engineering Co., further excludes any implied warranty of fitness with respect to racing and equipment, any and all inventory and service.