

Strange

Steering Rack Overview

Dec 30, 2024

Important notes

- S3468 Steering rack to be used for Drag racing **ONLY**
- Designed as a front steer rack (steering arms face towards the front) with slower control than our S3448
- See page 3 for pinion and clevis end adjustment
- If after reading, you have any questions or comments, please do not hesitate to call us.

Features

Steering rack and Pinion

- 1.12" of travel per pinion revolution
- 24.5" tie rod centers
- 20° horizontal pinion angle
- 9/16"-26 spline pinion - Same spline as Mustang/Pinto and fits steering U-joint made by Sweet Manufacturing Part #401-50613.
- 0° vertical pinion angle as shipped
- Pinion angle can be adjusted to 20° to 40°
- 4.25" total rack travel (3.80 turns lock to lock)
- Mounting clamp centers -11.60"

Clevis Ends

- 6061-T6511 billet aluminum
- Accepts 3/8" high misalignment rod ends HXAM-16T (RH threads) HXAB-16T (LH threads)
- Black anodized finish

Mounting clamp - Pinion side

- 6061-T6511 billet aluminum
- 7/16"-14 bolt holes on 1.25" centers
- Black anodized finish

Mounting clamp - Opposing Side

- 6061-T6511 billet aluminum
- 3/8-16 bolt holes on 1.375" centers
- Black anodized finish

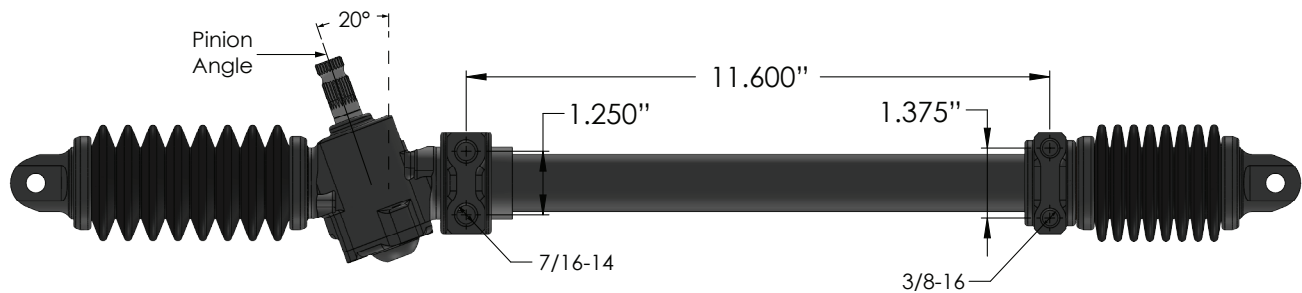
Housing Tube

- 6061-T6511 billet aluminum
- Black anodized finish

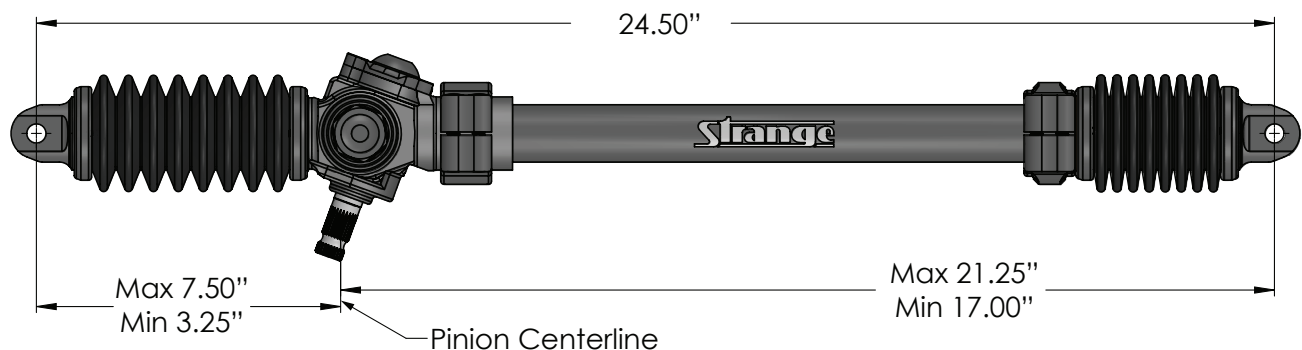
Pinion

- 4140 premium alloy steel
- Heat treated for hardness

S3468 Steering rack mounting dimensions



S3468 Steering rack total travel



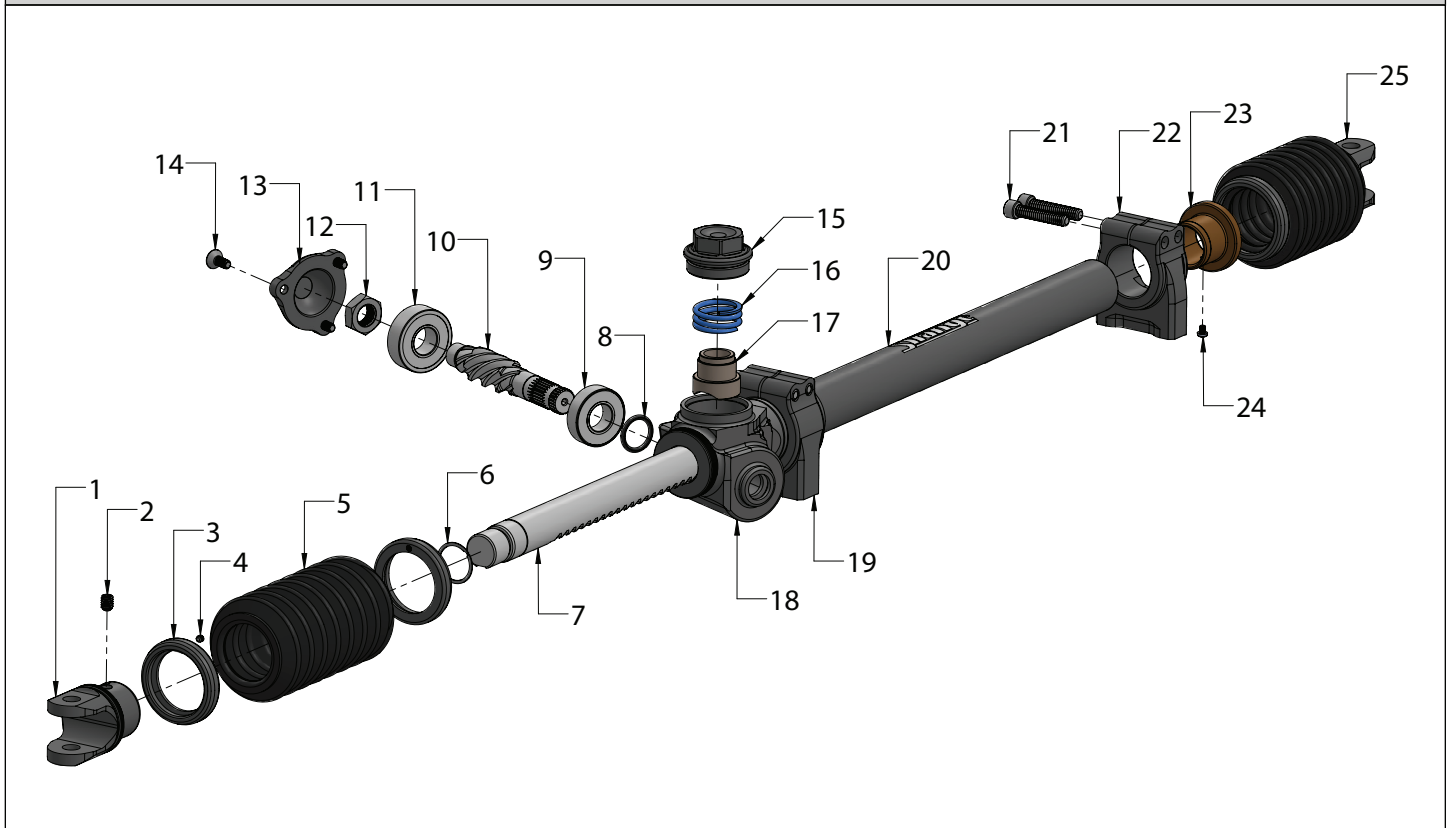
Strange

Steering Rack Parts List

S3468 KIT CONTENTS

ITEM#	PART#	QTY	DESCRIPTION	ITEM#	PART#	QTY	DESCRIPTION
1	S3448K	1	End Clevis- St. Rack L	13	S3448F	1	Pinion Retainer Cap
2	S3448N	2	1/4-20 X 5/16 Set Screw SS	14	S3448O	3	10-24 x 1/2" FHS SS
3	S3448Q	4	Retainer Nut- Boot	15	S3448G	1	Preload Retainer Cap
4	SST158	4	6-32 X 1/8" Set Screw	16	S510E20	1	Preload Spring
5	S3448U	2	2.18 OD x 6" Long Boot	17	S3448H	1	Preload Bushing
6	S3448T	2	VS-81 Smalley retainer	18	S3448A	1	Steering Rack Housing
7	S3448B	1	22.25" Round Rack Slow Ratio	19	S3448I	1	Mounting Clamp "A"
				20	S3448D	1	Rack Housing Tube
8	S3441O	1	O-ring #114	21	S3448M	4	1/4-20 X 1.25 SHCS SS (Locking)
9	S3448R	1	Bearing- 6002JEM SKF	22	S3448J	1	Mounting Clamp "B"
10	S3468C	1	Pinion Shaft - Slow Ratio	23	S3448E	1	Housing Bushing
11	S3448S	1	Bearing- 6202JEM SKF	24	S3448P	2	M3 x 4mm Stainless Steel Screw
12	H1135C	1	1/2-20 Flexlock Nut	25	S3448KR	1	End Clevis- St. Rack R

S3468 Steering rack assembly exploded view



Strange

Steering Rack Adjustments

FIGURE# 1: DISASSEMBLY

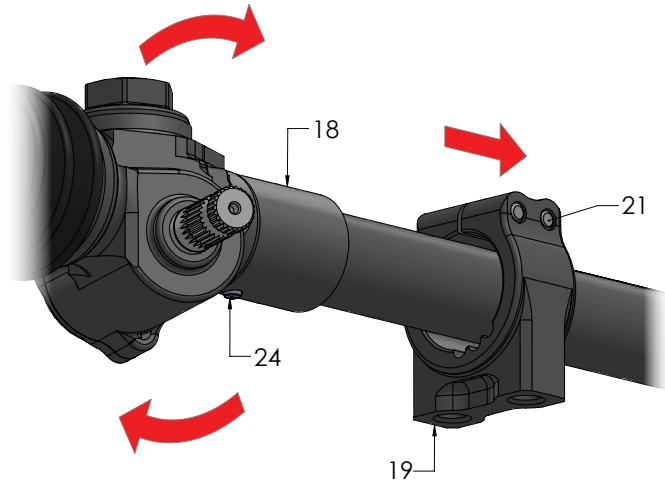
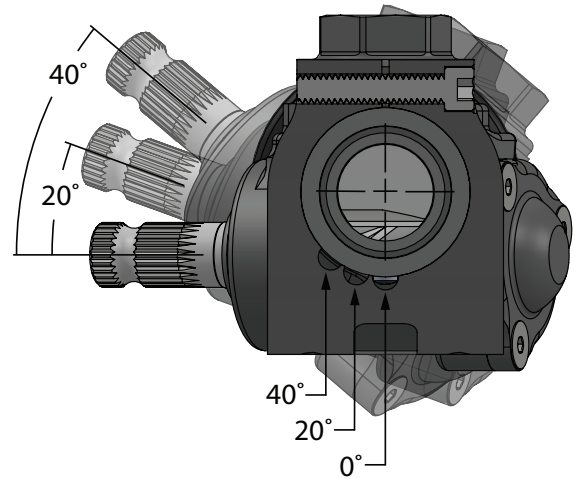


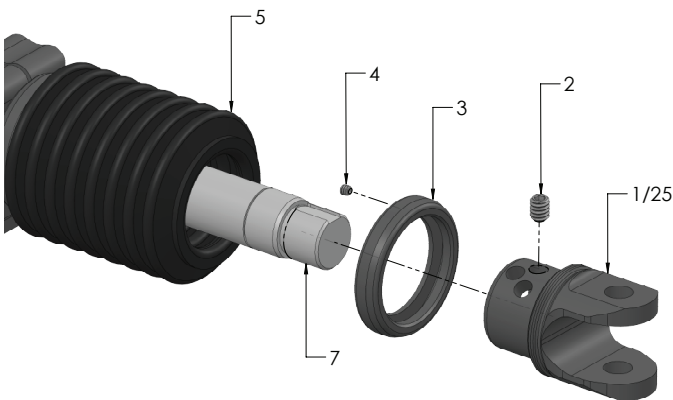
FIGURE #2: HOUSING POSITION



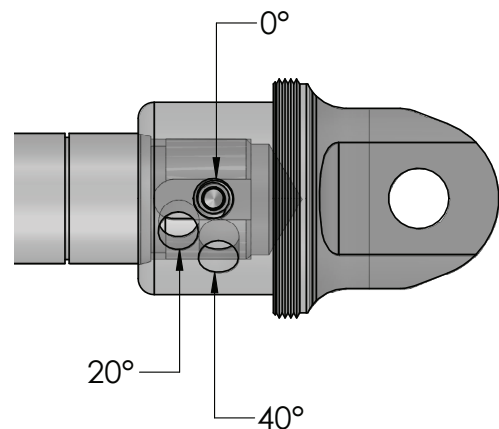
Steering rack housing adjustment

1. Loosen the screws (21) that are holding the mounting clamp (19) on the steering rack housing (18).
2. Slide the mounting clamps off of the steering rack housing.
3. Rotate the steering rack housing (19) to either the 0°, 20° or 40° position. (Figure 2)
4. Slide the mounting clamp back onto the housing and button head screw (24).
5. Retighten the screw to secure the mounting clamp to the housing

FIGURE# 3: CLEVIS END DISASSEMBLY



FIGURE# 4: CLEVIS END POSITION



Driver's side shown

Note: A little end play is expected in the Clevis

End Clevis adjustment

1. Loosen the set screw (4) attaching the boot (5) to the boot retaining nut (3) and unscrew the retaining nut from the clevis end.
2. Loosen the set screw (2) inside the clevis end (1/25) and rotate the clevis end so that one of the holes shown in Figure 4 lines up with the mounting face on the steering rod (7).
3. Retighten the retaining nut onto the clevis end.
Note: Apply some grease to the boot lip to smooth the tightening of the boot retaining nut.
4. Retighten the set screw retaining the boot into retaining nut (3) to lock the boot (5) in place.