

Installation & Adjustment

Instructions

Kit # S2061
Coil-Over Strut
 (sold per unit)

Applications: 82-92 Camaro

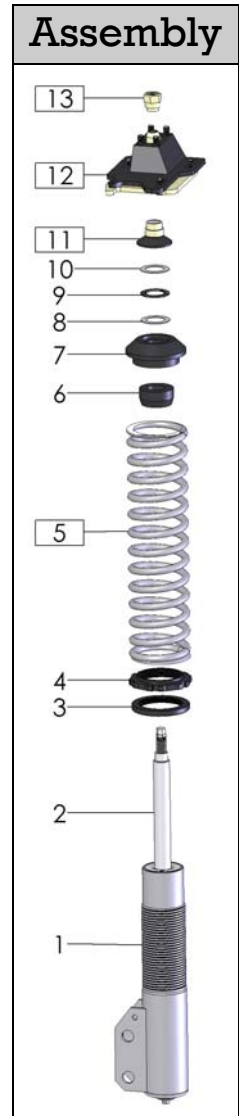
IMPORTANT NOTES:

- Internal components are not all listed in kit contents & are only serviceable by Strange Engineering.
- Aftermarket caster camber plates & 2.5 I.D. coil springs (12" or 14" long) are required for this kit.
- Contact Strange Engineering for Racecraft caster camber kits and Hypercoil springs.
- Stroke is identical to OEM however, extended and compressed lengths are 1" shorter allowing for lower ride height.
- # Symbol indicates a part which is NOT included (Figure #1)

Kit Contents

Item #	Part #	Qty.	Description
1	S2061A	1	Strut Body/ Strut Assembly
2	S2061G	1	Strut Piston Rod
3	S3402E	1	Adjusting Jam Nut
4	S3402D	1	Bottom Spring Seat Nut
5	—	—	Coil Spring
6	S3600W	1	Compression Bumper / Bump Stop
7	S6001D	1	Top Spring Seat
8	S4000M	1	Thrust Washer
9	S4000N	1	Thrust Bearing
10	S4000M	1	Thrust Washer
11	—	1	Thrust Bearing Cover/ Strut Spacer
12	—	—	Aftermarket Adjustable Caster Camber Plate
13	—	—	M14 x 1.5mm <i>factory thread</i> Strut Nut/Spacer (Racecraft shown)
14	S6001E	—	Thrust Bearing Cover (Not needed with Racecraft caster camber kits.)

Assembly



Installation Instructions:

1. Raise and support front of vehicle.
 2. Remove the stock front strut with the spring from the vehicle.
 3. Check fitment of aftermarket caster camber plate (13) on piston rod (2).
 4. Install the adjusting jam nut (3) and bottom spring seat nut (4) on the strut body (1).
 5. Slip the coil-spring (5) over the strut body (1) and slide the bump stop (6) on the piston rod (2).
 6. Install, in the following order onto the strut piston rod (2): top spring seat (7), first thrust washer (8), thrust bearing (9), second thrust washer (10), and strut bearing cover (11)/ strut spacer.
- Notes:** The two thrust washers (8,10) are identical. Racecraft aftermarket caster camber plate kit shown in figure 1 provides the thrust bearing cover (11) and strut spacer pre-pressed as a single part while other brands may not. Strut spacers (11,13) are shown only as a general idea of how strut spacers are installed. Additional spacers may be necessary to ensure the strut piston rod is positioned near the middle of the suspension travel at ride height. Consult caster camber kit installation instructions for detailed arrangement of strut spacers.
7. After the caster camber plate (12) has been properly mounted to the shock tower, slide the assembly into the caster camber plate. Then install the shock nut/ strut spacer (13) provided with aftermarket caster camber plate kit.
- (Only use the 7/16" wrench to hold the strut piston rod from spinning when tightening the shock nut.)

Extension Adjustment

- 3 1/2 Turns MAX
- DO NOT FORCE**



Base Settings (Drag Racing)

Turn extension towards soft to allow for weight transfer and ability to "plant" rear tires. Adjust compression to 4th-6th setting or 3-5 clicks from full counter clockwise. Fine tune to preference.

Adjusting Ride Height

Ride height is adjusted by rotating the bottom spring seat nut (4). The adjusting jam nut (3) is tightened to lock the bottom spring seat nut in place. **Do not** alter the height of the bump stop (6) to change ride height or stroke. Severe damage to internals will result.

Compression Adjustment

- 12 Clicks
- 13 Settings (full counter clockwise 1st setting and full clockwise 13th setting.)

