

**Installation Instructions**

**Kit # B4596WC/2**  
 Lightweight Brake Kit for  
 Spindle Mount Wheels

**Applications: Funny Cars**  
 Designed for 2009 & Later  
**S3423** Strange Adjustable Height  
 Spindles & one piece wheels

**IMPORTANT NOTES:**

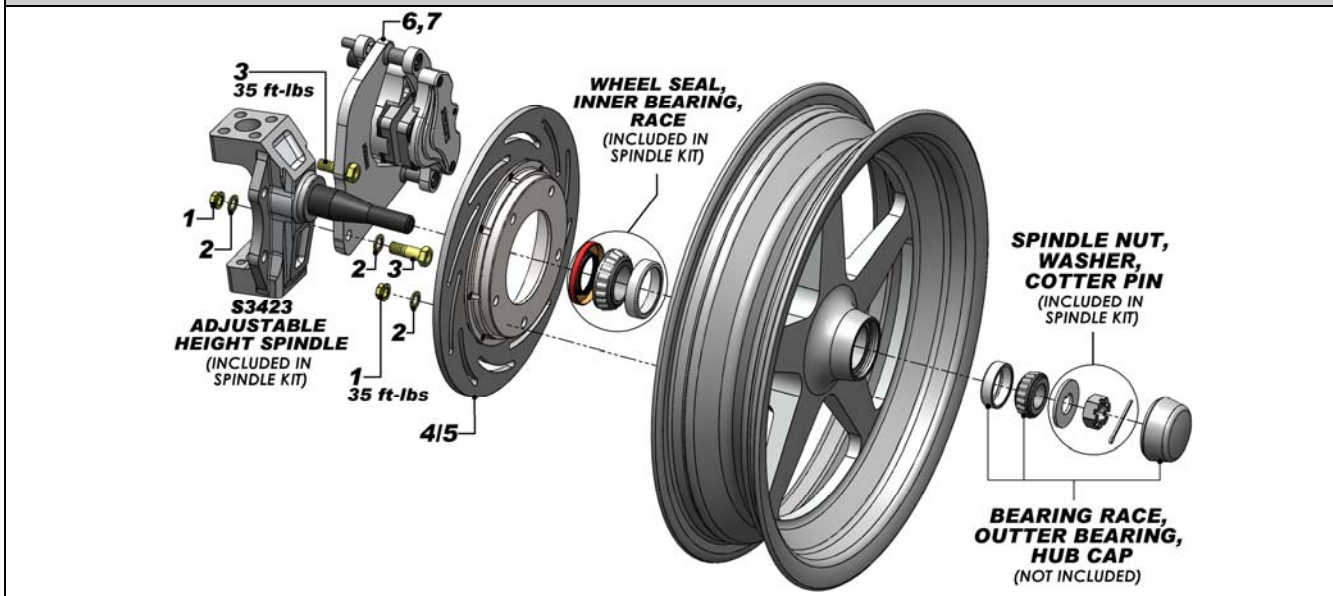
- B2782, B2783 and B2786 10" steel rotors have 0.215" minimum thickness.
- B2510 Semi-metallic brake pads have 0.200" minimum thickness.
- Also consult Strange Adjustable Height Spindle Instructions.
- Strange Engineering brake kits are designed for DRAG RACING ONLY!

**BEFORE YOU BEGIN INSTALLATION:**

Read these instructions thoroughly and save for future reference. If after reading these installation instructions, you have any questions or comments, please do not hesitate to call us.

Kit Contents			
Item #	Part #	Qty.	Description
1	F1282	18	3/8"-24 Jet Nut
2	S3402N	26	3/8" Washer
3	B5000Z	4	3/8-24 x 1.187" Bolt
4	B2782	1	Passenger Side Slotted Rotor ( <i>B4596WC KIT ONLY</i> )
—	B2783	1	Driver Side Steel Slotted Rotor ( <i>B4596WC KIT ONLY</i> )
5	B2786	2	Two Piece Steel Slotted Rotor ( <i>B4596WC2 KIT ONLY</i> )
6	B1816	1	Strange Single Piston Caliper Kit w/ Soft Pads & Slider Assembly ( <i>PAIR</i> )
7	B4592A	2	2009 & Later Spindle (S3423) Caliper Bracket

**Figure 1: Kit Assembly**



**Note:** Two piece steel rotor (B2786) is shown above however a B2782 steel rotor assembles identically.

**Caliper Bracket and Rotor Installation:**

1. Disassemble brake caliper by removing bridge bolt (9) and two caliper bolts (8). The slide pins (13) should remain attached to the caliper mounting bracket (7). Slide the inboard and outboard "hot dog" brackets (11,19) off the slide pins (13) to separate the inboard and outboard halves. (**Figure #2**)
2. Attach the caliper mounting bracket with the slide pins to the spindle body using the two 3/8" bolts (3), washers (2) and jet nuts (1). **Torque 3/8" bolt (3) to 35 ft-lbs.**  
 Notes: The threads of the slide pins always face inboard. The mounting bracket can be installed multiple ways depending on whether the caliper is intended for installation towards the front or rear of the vehicle.
3. Mount the rotor on the wheel using 3/8" studs supplied with the wheel and the 3/8" washers (2) and jet nuts (3) supplied with this brake kit. Torque to approximately 35 ft-lbs. (**Figure #1**)
4. Follow the spindle kit instructions to assemble the wheel onto the spindle.

## Installation Instructions

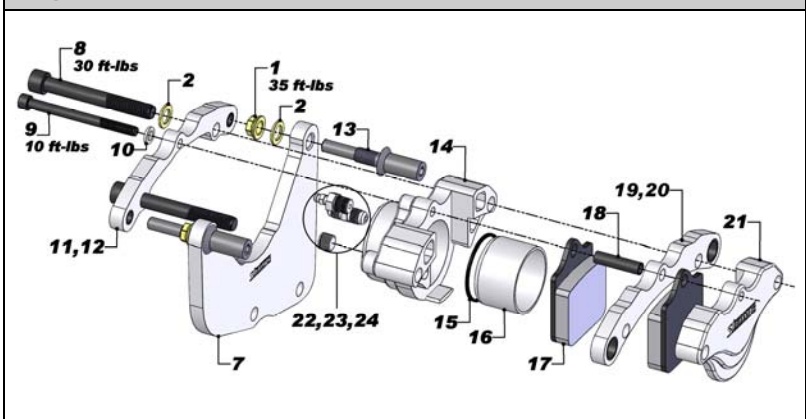
**Kit #** B4596WC/2

**Applications:** Funny Cars

### Caliper Assembly and Installation:

8. The caliper must now be assembled onto the caliper bracket. Slide the inboard and outboard "hotdog" brackets (11,19) onto the slide pins (13).
9. Insert the two caliper bolts (8) and bridge bolt (9) into the inboard "hotdog" bracket ensuring to use the appropriate washer for each bolt. The threads on the bolts face outboard.
10. Slide one brake pad (17) into the inboard caliper half (14) and install both over the caliper and bridge bolts. **Ensure bleeder assembly (24) is always installed in the highest portion of the caliper.**
11. Slide the bridge bolt tube (18) thru the bridge bolt and brake pad.
12. Feed the outboard caliper half (21) and outer brake pad either through the wheel or over the rotor and slide over the two caliper bolts and bridge bolt tube.
13. Torque the caliper bolts to 30 ft-lbs and torque the bridge bolt to 10 ft-lbs.
14. Connect the hydraulic lines to the calipers. Calipers are tapped to 1/8"-27 NPT and supplied with -3AN fitting. Connect them to existing lines or use new -3AN braided steel line (Teflon lines). Bleed calipers with DOT 4 or DOT 5.1 brake fluid only!
15. A proper break in procedure is required to avoid brake fade and uneven rotor deposits from the pads. It consists of 8-10 brake applications increasing in harshness while allowing the brakes to cool slightly in between; DO NOT keep the brakes applied between stops. After the last stop the brakes should be allowed to cool completely.

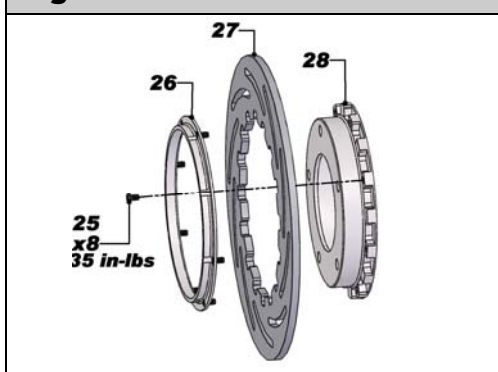
**Figure 2: B1816 Caliper Exploded View**



**B1816 Caliper Kit Breakdown**

Item #	Part #	Qty.	Description
8	B1260I	4	3/8"-16 x 3" Caliper Bolt
9	B1250K	2	1/4"-20 x 3" Bridge Bolt
10	B1260E	2	1/4" Washer
11	B1260CC	2	Inboard "Hotdog" Bracket
12	B1260K	4	Garlock Bearing ( <i>pre-installed in B1260CC</i> )
13	B3311C	4	Slide Pin
14	B1260BC	2	Single Piston Caliper Inboard Half
15	B5000T	2	0.125" Square O-Ring
16	B5000S1	2	Caliper Piston
17	B2510	4	Single Piston Organic Brake Pad
18	B1260J	2	Bridge Bolt Tube
19	B1260DC	2	Outboard "Hotdog" Bracket
20	B1250H	4	Garlock Bearing ( <i>pre-installed in B1260DC</i> )
21	B1260AC	2	Single Piston Caliper Outboard Half
22	L4000O	2	1/8" NPT Socket Plug ( <i>pre-installed in B1260BC</i> )
23	P2316	2	1/8 x -3AN Fitting ( <i>pre-installed in B1260BC</i> )
24	P2365F	2	Bleeder Assembly ( <i>pre-installed in B1260BC</i> )

**Figure 3: Two Piece Rotor**



**B2786 Two Piece Rotor Breakdown**

Item #	Part #	Qty.	Description
25	B1250E	8	10-24 x 3/8" Screw
26	B1250W	1	Retainer Ring
27	B2786A	1	10" Slotted Steel Rotor
28	B1250S	1	Rotor Adapter

**WARNING – RACING IS HAZARDOUS · STRANGE BRAKES ARE FOR LEGAL DRAG RACING ONLY**

Disclaimer of Warranty – Purchasers using Strange Engineering racing components and equipment any and all inventory services, purchasers acknowledge that due to differing conditions and circumstances under which all equipment and parts are installed and used, purchasers are not relying on Strange Engineering Co. skill or judgment to select or furnish the proper part or equipment. Purchasers expressly affirm they are relying upon their own skill or judgment to select and purchase suitable goods. Strange Engineering Co. makes no warranties whatsoever, expressed or implied, oral or written, to purchasers. There is no warranty of merchantability made to purchasers. Strange Engineering Co., further excludes any implied warranty of fitness with respect to racing and equipment, any and all inventory and service.