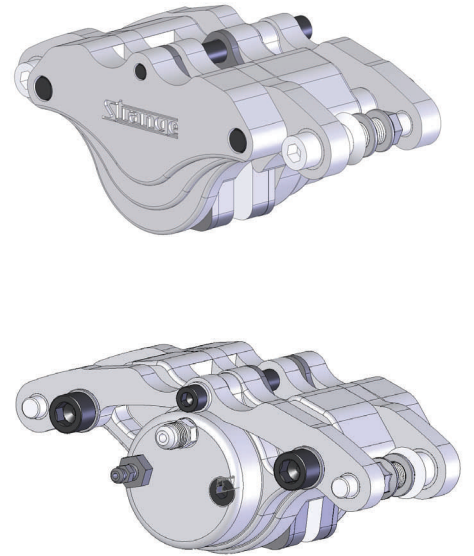


## Instructions for B1816 Strange Single Piston Caliper Kit.

**Before you begin installation:** Strange Engineering brake kits are designed for **DRAG RACING ONLY!** Read these instructions thoroughly and save for future reference. If after reading these installation instructions, you have any questions or comments, please do not hesitate to call us.

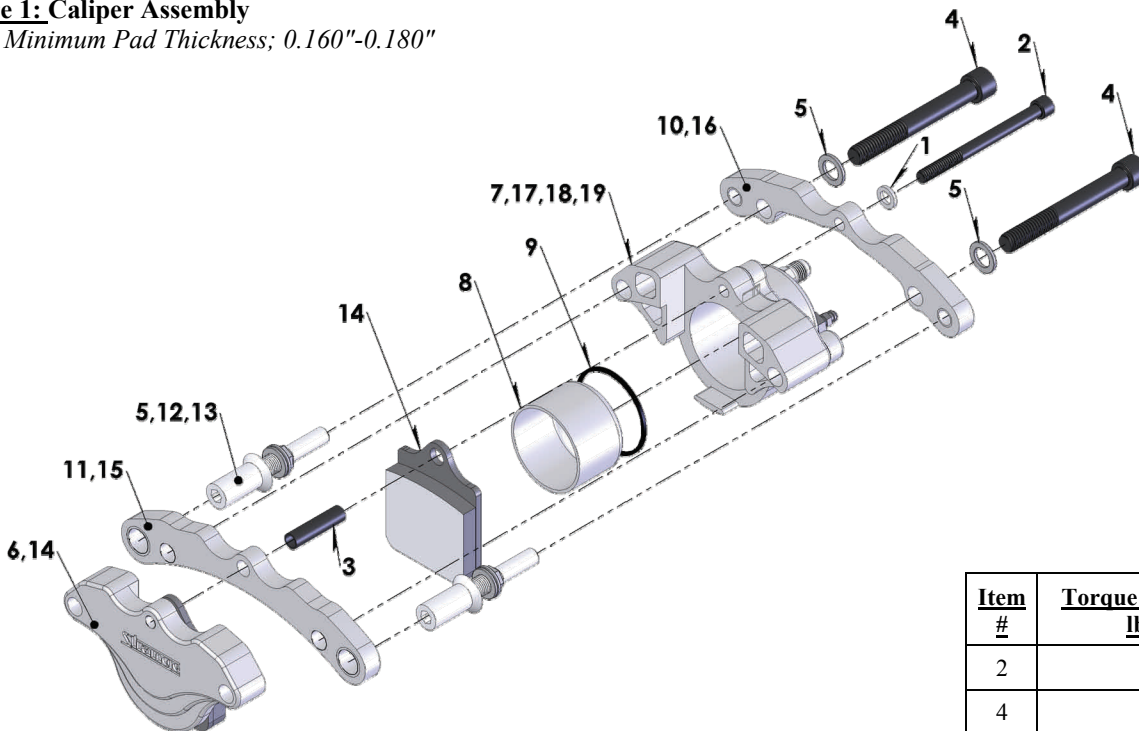
### KIT CONTENTS

<u>Item#</u>	<u>Part#</u>	<u>Qty.</u>	<u>Description</u>
1	B1260E	2	1/4" Washer
2	B1250K	2	1/4"-20 x 3" Bridge Bolt
3	B1260J	2	Bridge Bolt Tube
4	B1260I	4	3/8"-16 x 3" Caliper Bolt
5	S3402N	8	3/8" AN Washer
6	B1260AC	2	Single Piston Caliper Outboard Half
7	B1260BC	2	Single Piston Caliper Inboard Half
8	B5000S1	2	Caliper Piston
9	B5000T	2	0.125" Square O-Ring
10	B1260K	4	Garlock 05-DU06 Bearing (installed in B1260CC)
11	B1250H	4	Garlock 08-DU06 Bearing (installed in B1260DC)
12	F1282	4	3/8-24 "Jet Nut"
13	B3311C	4	Slide Pin
14	B2510	4	Single Piston Organic Pad
15	B1260DC	2	"Hotdog" Bracket (outboard)
16	B1260CC	2	"Hotdog" Bracket (inboard)
17	L4000O	2	1/8" NPT Socket Plug (installed in B1260BC)
18	P2316	2	1/8" x -3AN Fitting (installed in B1260BC)
19	P2365FA/B	2	Bleed screw/adapter assembly (installed in B1260BC)



**Figure 1: Caliper Assembly**

*Note: Minimum Pad Thickness; 0.160"-0.180"*



<u>Item #</u>	<u>Torque Spec (ft-lbs)</u>
2	8-10
4	25-30

# Installation and Removal Instructions

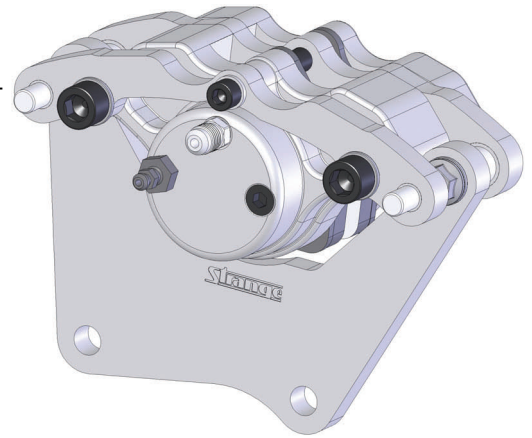
## Disassembly

- 1) Disconnect the brake line from -3AN fitting (18).
- 2) Remove bridge bolt (2), bridge bolt tube (3) and two 3/8"-16 Caliper Bolts (4).
- 3) Slide the inboard and outboard "hotdog" brackets (15,16) off of the slide pins (13) to separate the inboard and outboard caliper assemblies.

*Note:* To service piston O-ring (9), remove the caliper piston (8) by connecting a compressed air source to the -3AN fitting (18) and gently applying air so as to push the piston (8) from the inboard caliper half (7). To reinstall piston and O-ring apply a small layer of white grease to outside of piston (8) and gently push it into the bore by hand.

## Assembly

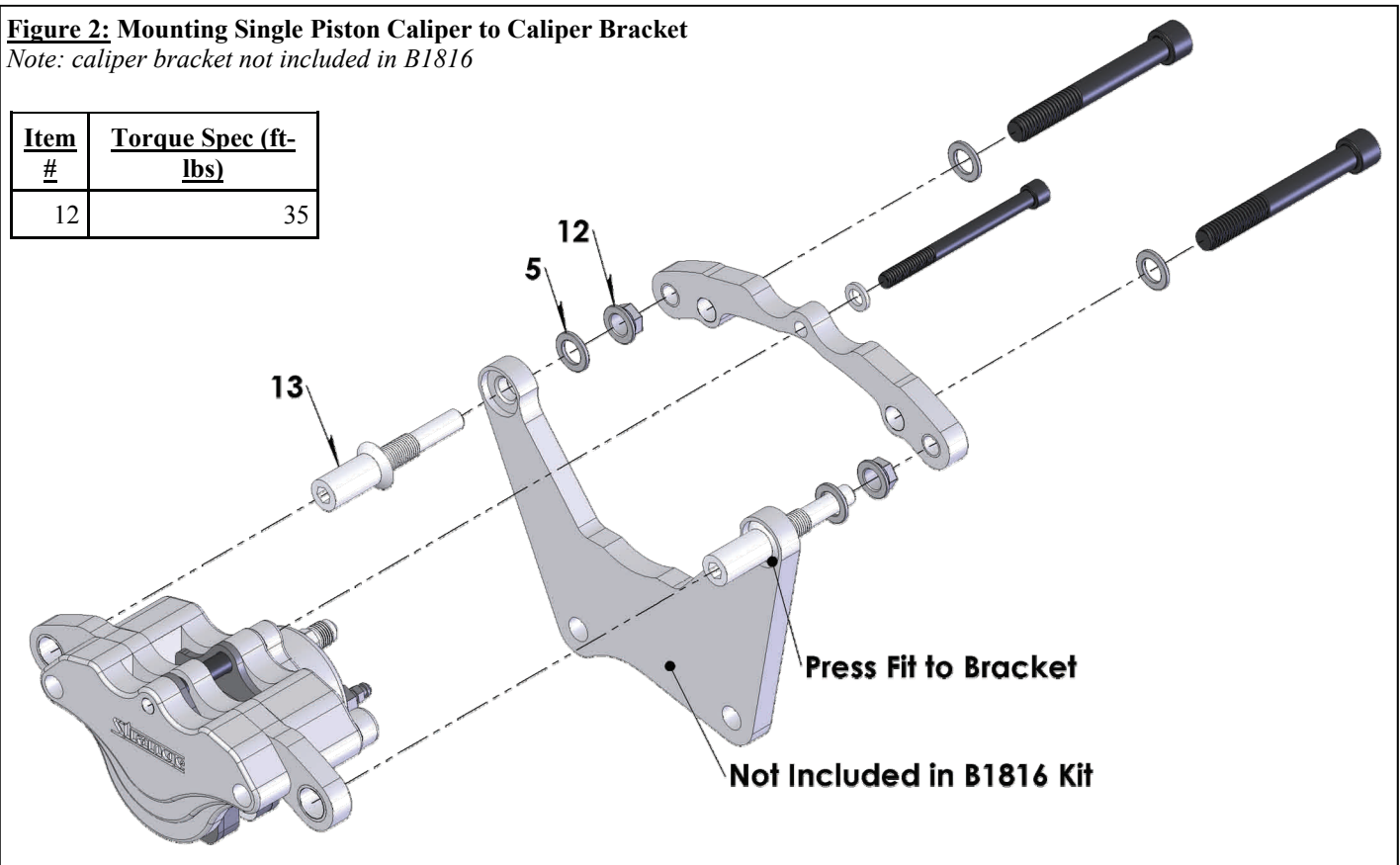
- 1) It will be necessary to install new slide pins (13) to caliper bracket (not included in caliper kit). It is **Recommended** that the new slide pins (13) be pressed into the bracket using a hand press.
- 2) Once the slide pins (13) are installed, secure using the 3/8" AN washer (5) and 3/8"-24 "jet" nut (12). Torque to 35 ft-lbs.
- 3) Slide the inboard and outboard "hotdog brackets" (15,16) onto the slide pins (13).
- 4) Insert 1/4"-20 bridge bolt (2) and two 3/8"-16 caliper bolts (4) into inboard "hotdog" bracket (16), ensuring to use appropriate washers under the head of each bolt.
- 5) Slide one brake pad (14) into inboard caliper half (7) and install both over the bridge bolt (2) and caliper bolts (4) according to figure 1.
- 6) Install wheel and rotor assembly onto spindle according to the wheel manufacturer's directions.
- 7) Feed the outboard caliper half (6) and outer brake pad (14) either through the wheel or over the rotor and slide it onto the slide pins (13).
- 8) Torque the 3/8"-16 caliper bolts to 25-30 ft-lbs and the 1/4"-20 bridge bolt to 8-10 ft lbs.
- 9) **BLEED BRAKES BEFORE USE.**



**Figure 2: Mounting Single Piston Caliper to Caliper Bracket**

*Note: caliper bracket not included in B1816*

Item #	Torque Spec (ft-lbs)
12	35



### WARNING – RACING IS HAZARDOUS · STRANGE BRAKES ARE FOR LEGAL DRAG RACING ONLY

**Disclaimer of Warranty** – Purchasers using Strange Engineering racing components and equipment any and all inventory services, purchasers acknowledge that due to differing conditions and circumstances under which all equipment and parts are installed and used, purchasers are not relying on Strange Engineering Co. skill or judgment to select or furnish the proper part or equipment. Purchasers expressly affirm they are relying upon their own skill or judgment to select and purchase suitable goods.

Strange Engineering Co. makes no warranties whatsoever, expressed or implied, oral or written, to purchasers. There is no warranty of merchantability made to purchasers. Strange Engineering Co., further excludes any implied warranty of fitness with respect to racing and equipment, any and all inventory and service.