

## 9" Center Section Guidelines & Torque Specifications

Item #	Part #	Description	Torque Spec.	Notes
1	N1912K	10-24 X 1/2 FHSCS	Hand-tight	Blue Loctite
2	F1282	3/8-24 Nut	35 ft-lbs	none
3	L7010AB	9/16-18 12 Point Nut	80 ft-lbs	Anti-seize
4	N1950C	3/8-24 x 1.25 ARP 12 Pt. Screw	35 ft-lbs	none
5a	N1922A	28 Spline Pinion Nut	200 ft-lbs	Red Loctite
5b	N1922B	35 Spline Pinion Nut	250 ft-lbs	Red Loctite
6	N1912L	7/8-14 Plug	40 ft-lbs	none
7	N1910	Load Bolt Assembly (optional)	see notes below	none
8a	L6000Q	7/16-20 ARP 12 Pt. Screw	65 ft-lbs	Red Loctite
8b	L6000R	1/2-20 ARP 12 Pt. Screw	85 ft-lbs	Red Loctite
9a	N1905B	5/16-18 x 0.375 BHSCS	10 ft-lbs	none
9b	N1902D	5/16-18 x 0.625 BHSCS	10 ft-lbs	none
10	N2300E	7/16-14 x 1.50 ARP 12 Pt. Screw	50 ft-lbs	Anti-seize
11a	N1965	7/16-20 HHCS	65 ft-lbs	Red Loctite
11b	N1964	1/2-20 HHCS	85 ft-lbs	Red Loctite
12	B1757B	3/8-16 x 1.25 HHCS	35 ft-lbs	none
13	L4000J	3/8 NPT Socket Pipe Plug	40 ft-lbs	Thread Sealer
14	H1122D	1/2-20 x 3" SHCS	80 ft-lbs	Anti-seize
15	B1320R	3/8-16 x 1.50" HHCS	35 ft-lbs	none
16	N1908E	1/2 NPT Socket Pipe Plug	40 ft-lbs	Thread Sealer
17	N1908F	1/2-13 x 2.50" SHCS	80 ft-lbs	Anti-seize

### Gear Oil Type & Amount

- SAE 85W-140 gear oil is recommended
- 9" cases require 2.5 quarts of gear oil

### Break-in Procedure for Street Gears

- 1) No harsh acceleration!
- 2) Drive vehicle 50 miles
- 3) Allow 1/2 hour for cool down
- 4) Repeat for total of 250 miles
- 5) At 500 miles remove the center section, fully clean, use a fresh gasket and reinstall

### Load Bolt Set-up & Adjustment

- 1) Tighten load bolt while turning assembly by hand until drag is felt.
- 2) Loosen load bolt approx. .001" from contacting the ring gear.
- 3) Rotate assembly again. If drag is felt, loosen load bolt an additional 0.001". If no drag is felt, hold load bolt in place and tighten the jam nut
- 4) Load bolt may need readjustment after every 4-8 passes depending on frequency of runs.

### Differential Friction Modifier

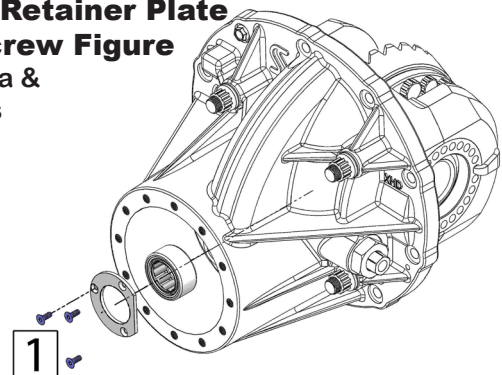
- Required for clutch-type limited slip differentials
- One entire bottle (3.8 fl. oz.) is required in addition to the 2.5 quarts of gear oil.
- Ford Racing brand additive part # CM-19546-A1 is recommended.
- Additive is required even if gear oil manufacturer states oil is compatible with limited slip differentials.

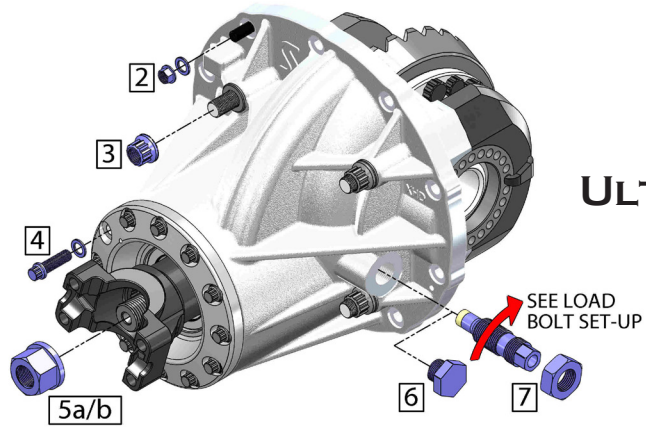
### Storage of Center Sections

Differential bearings, pinion bearings, and ring and pinion should be liberally oiled with gear oil and then sealed from the atmosphere in a plastic bag.

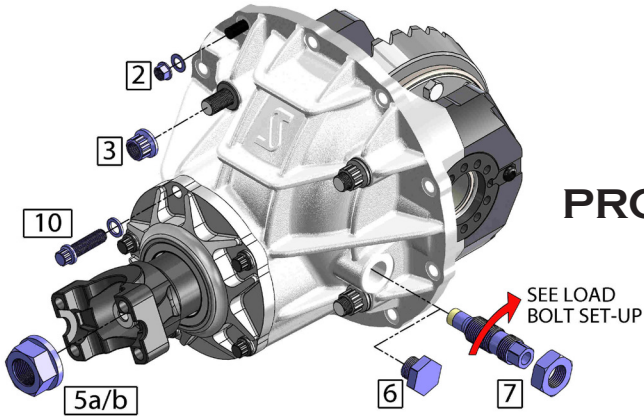
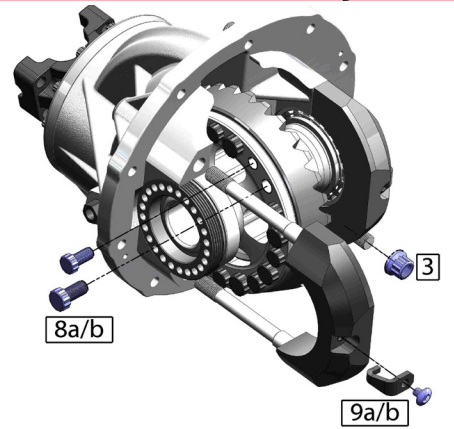
### Tail Bearing Retainer Plate Flat Head Screw Figure

- Applies to Ultra & PRO HD Cases

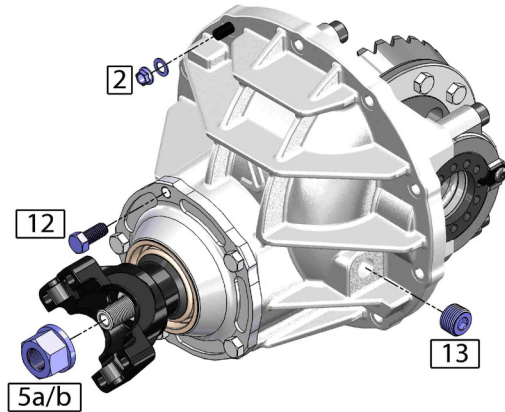
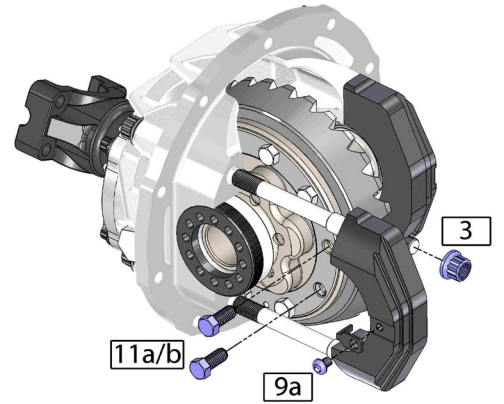




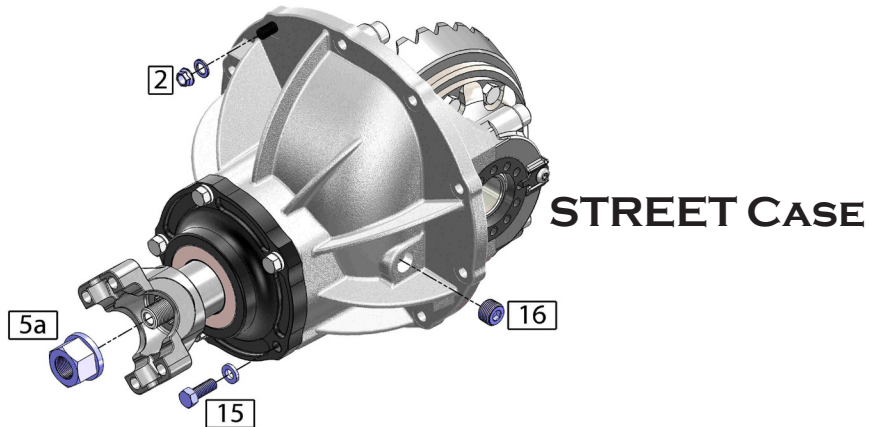
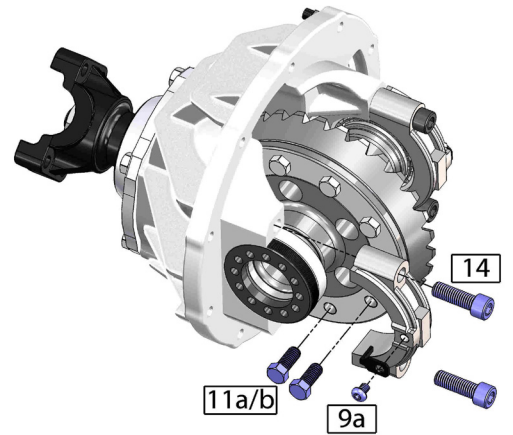
ULTRA CASE



PRO HD CASE



PRO CASE



STREET CASE

