

# Strange

Page 1 of 2

Jun 23, 2017

## PRO SERIES SINGLE-PISTON FRONT BRAKE KIT INSTRUCTIONS

**KIT #**  
B4596 - Lightweight brake kit for Spindle mount wheels

**APPLICATIONS**  
Altered & Funny Cars with S3423 Adj. height spindles

### Before you begin installation:

- Strange Engineering brake kits are designed for DRAG RACING ONLY!
- Read these instructions thoroughly and save for future reference.
- If after reading these installation instructions, you have any questions or comments, please do not hesitate to call us.

### KIT CONTENTS

ITEM#	PART#	QTY	DESCRIPTION
1	B1260E	2	1/4" Bridge bolt washer
2	B1260I	4	3/8"-16 x 3" caliper bolt
3	B1260J	2	Bridge bolt tube
4	B1250K	2	1/4"-20 x 3" bridge bolt
5	S3402N	12	3/8" AN Washer
6	B5000T	2	0.125" Square O-Ring
7	L4000O	2	1/8" NPT Socket Plug
8	P2316	2	1/8" NPT x #3 AN fitting
9	P2365F	2	1/8" NPT Bleeder Assembly
10	B1260AC	2	Single Piston Caliper (outboard half)
11	B1260BC	2	Single Piston Caliper (inboard half)
12	B5000S1	2	Caliper Piston
13	B1250H	4	Garlock 08-DU06 Bearing (installed in B1260DC)
14	B1260K	4	Garlock 05-DU06 Bearing (installed in B1260CC)
15	B3311C	4	Slide Pin
16	F1282	8	3/8"-24 Jet Nut
17	B1260CC	2	"Hotdog" Bracket (inboard)
18	B1260DC	2	"Hotdog" Bracket (outboard)
19	B2510	4	Semi-Metallic brake pad
20	B4592A	2	Strange Aluminum Strut Caliper Mount
21	B2782	1	10" x 1" R.H. Rotor (B4597WC kit)
Not Shown	B2783	1	10" x 1" L.H. Rotor (B4597WC kit)
Not Shown	B2780	1	10" x 1.5" R.H. Rotor (B4598WC kit)
Not Shown	B2781	1	10" x 1.5" L.H. Rotor (B4598WC kit)
25	B1260L	2	Strut Spacer (for B4597WC Kit)
26	S3402Q	4	3/8"-24 Caliper mount bolt

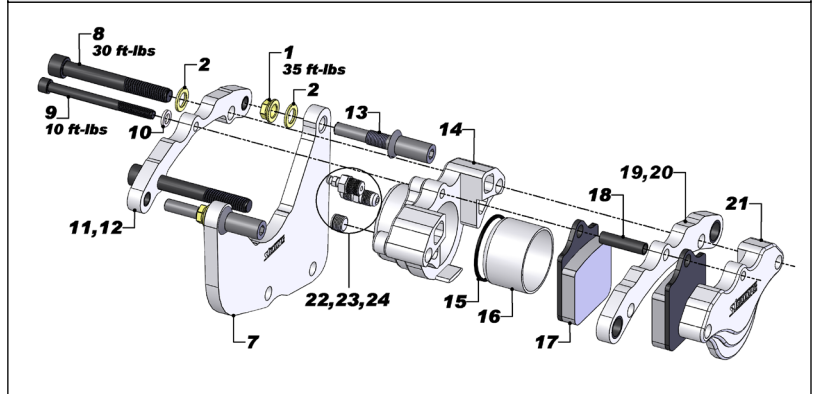
### Caliper Bracket and Rotor Installation:

1. Disassemble brake caliper by removing bridge bolt (9) and two caliper bolts (8). The slide pins (13) should remain attached to the caliper mounting bracket (7). Slide the inboard and outboard "hot dog" brackets (11,19) off the slide pins (13) to separate the inboard and outboard halves. (Figure #2)
2. Attach the caliper mounting bracket with the slide pins to the spindle body using the two 3/8" bolts (3), washers (2) and jet nuts (1). Torque 3/8" bolt (3) to 35 ft-lbs.  
**Notes:** The threads of the slide pins always face inboard. The mounting bracket can be installed multiple ways depending on whether the caliper is intended for installation towards the front or rear of the vehicle.
3. Mount the rotor on the wheel using 3/8" studs supplied with the wheel and the 3/8" washers (2) and jet nuts (3) supplied with this brake kit. Torque to approximately 35 ft-lbs. (Figure #1)
4. Follow the spindle kit instructions to assemble the wheel onto the spindle.

## Caliper Assembly and Installation:

5. The caliper must now be assembled onto the caliper bracket. Slide the inboard and outboard "hotdog" brackets (11,19) onto the slide pins (13).
6. Insert the two caliper bolts (8) and bridge bolt (9) into the inboard "hotdog" bracket ensuring to use the appropriate washer for each bolt. The threads on the bolts face outboard.
7. Slide one brake pad (17) into the inboard caliper half (14) and install both over the caliper and bridge bolts. Ensure bleeder assembly (24) is always installed in the highest portion of the caliper.
8. Slide the bridge bolt tube (18) thru the bridge bolt and brake pad.
9. Feed the outboard caliper half (21) and outer brake pad either through the wheel or over the rotor and slide over the two caliper bolts and bridge bolt tube.
10. Torque the caliper bolts to 30 ft-lbs and torque the bridge bolt to 10 ft-lbs.
11. Connect the hydraulic lines to the calipers. Calipers are tapped to 1/8"-27 NPT and supplied with -3AN fitting. Connect them to existing lines or use new -3AN braided steel line (Teflon lines). Bleed calipers with DOT 4 or DOT 5.1 brake fluid only!
12. A proper break in procedure is required to avoid brake fade and uneven rotor deposits from the pads. It consists of 8-10 brake applications increasing in harshness while allowing the brakes to cool slightly in between; DO NOT keep the brakes applied between stops. After the last stop the brakes should be allowed to cool completely.

FIGURE # 2: Exploded B1816 Billet Caliper Assembly View



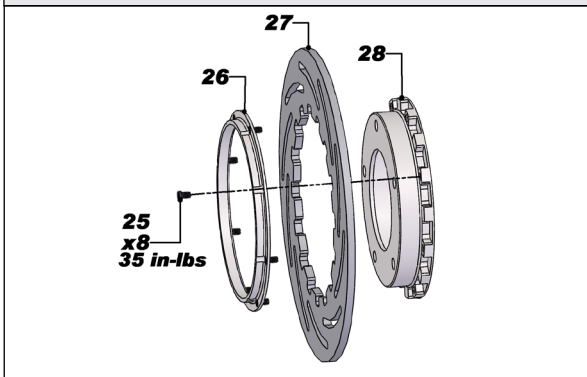
## B1816 CALIPER KIT BREAKDOWN

ITEM#	PART#	QTY	DESCRIPTION
8	B1260I	4	3/8"-16 x 3" Caliper Bolt
9	B1250K	2	1/4"-20 x 3" Bridge Bolt
10	B1260E	2	1/4" Washer
11	B1260CC	2	Inboard "Hotdog" Bracket
12	B1260K	4	Garlock Bearing (pre-installed in B1260CC)
13	B3311C	4	Slide Pin
14	B1260BC	2	Single Piston Caliper Inboard Half
15	B5000T	2	0.125" Square O-Ring
16	B5000S1	2	Caliper Piston
17	B2510	4	Single Piston Organic Brake Pad
18	B1260J	2	Bridge Bolt Tube
19	B1260DC	2	Outboard "Hotdog" Bracket
20	B1250H	4	Garlock Bearing (pre-installed in B1260DC)
21	B1260AC	2	Single Piston Caliper Outboard Half
22	L4000O	2	1/8" NPT Socket Plug (pre-installed in B1260BC)
23	P2316	2	1/8 x -3AN Fitting (pre-installed in B1260BC)
24	P2365F	2	Bleeder Assembly (pre-installed in B1260BC)

## B2786 TWO PIECE ROTOR BREAKDOWN

ITEM#	PART#	QTY	DESCRIPTION
25	B1250E	8	10-24 x 3/8" Screw
26	B1250W	1	Retainer Ring
27	B2786A	1	10" Slotted Steel Rotor
28	B1250S	1	Rotor Adapter

FIGURE # 3: Two Piece Rotor



WARNING - RACING IS HAZARDOUS · STRANGE BRAKES ARE FOR LEGAL DRAG RACING ONLY

Disclaimer of Warranty - Purchasers using Strange Engineering racing components and equipment any and all inventory services, purchasers acknowledge that due to differing conditions and circumstances under which all equipment and parts are installed and used, purchasers are not relying on Strange Engineering Co. skill or judgment to select or furnish the proper part or equipment. Purchasers expressly affirm they are relying upon their own skill or judgment to select and purchase suitable goods. Strange Engineering Co. makes no warranties whatsoever, expressed or implied, oral or written, to purchasers. There is no warranty of merchantability made to purchasers. Strange Engineering Co., further excludes any implied warranty of fitness with respect to racing and equipment, any and all inventory and service.